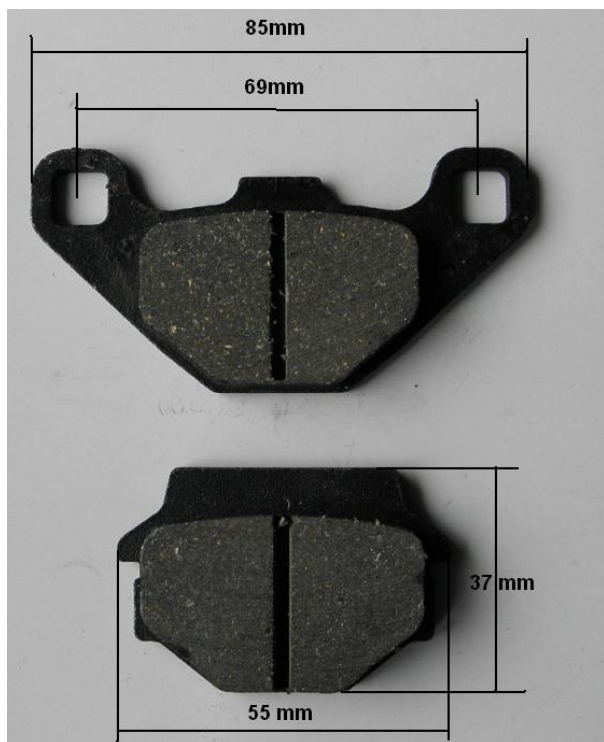




Utworzono 25-09-2024

Klocki hamulcowe



Cena : 10,00 zł

Nr katalogowy : **AW0913**

Stan magazynowy : **bardzo wysoki**

Średnia ocena : **brak recenzji**

Klocki hamulcowe

Przykładowe zastosowanie:

ACCESS 250 SPORT / RACING TOMAHAUK (LUCKY STAR)
ACCESS 300 SPORT / RACING TOMAHAUK
ACCESS 400 SPORT / RACING TOMAHAUK

ALFER AR 250 92 => R
ALFER AR 250 93 => R
ALFER VR 250 94 => R

APRILIA TUAREG 350 WIND 89 => R
APRILIA TUAREG 350 WIND 90 => R
APRILIA TUAREG 600 WIND 89 => F/R

GAS GAS CROSS 250 95 => R

HUSABERG MC 350 91 => 93 R
HUSABERG 500 all models 91 => R
HUSABERG 501 ENDURO => R
HUSABERG 600 ENDURO => R

HUSQVARNA CR 125 CROSS 91 => 95 R
HUSQVARNA WR 125 91 => 97 R
HUSQVARNA WR 240 91 => R
HUSQVARNA CR 250 CROSS 91 => R
HUSQVARNA WR 250 90 => R
HUSQVARNA WR 250 91 => 97 R
HUSQVARNA WR 260 91 => R
HUSQVARNA TE 350 90 => 95 R
HUSQVARNA TE 510 90 => R

KAWASAKI KSR 50 I/II 90 => R
KAWASAKI KG 100 G4 83 => F
KAWASAKI AR 125 A1 - LC 82 => F
KAWASAKI KH 125 K2-4 - L1 82 => 83 F
KAWASAKI KH 125 EX 82 => 83 F

KAWASAKI KMX 125 86 => 89 F
KAWASAKI KX 125 B2 - C1 82 => 85 F
KAWASAKI KX 125 86 => F/R
KAWASAKI KX 125 E2 - D1 - E2 87 => 88 R
KAWASAKI KR 150 SPORT 98 => R
KAWASAKI KR 150 98 => R
KAWASAKI KDX 200 C1 86 => 88 F
KAWASAKI KDX 200 E1 89 => F
KAWASAKI KMX 200 88 => R
KAWASAKI Z 200 A6 83 => F
KAWASAKI EX 250 H1 - H2 90 => R
KAWASAKI GPZ 250 85 => F
KAWASAKI KDX 250 BALIUS 91 => R
KAWASAKI KDX 250 ESTRELLA 92 => F/R
KAWASAKI KL 250 SUPER SHERPA 00 => R
KAWASAKI KLE 250 ANHELO 93 => R
KAWASAKI KLR 250 all models 84 => F
KAWASAKI KLX 250 H1 SUPER SHERPA 98 => R
KAWASAKI KMX 250 89 => F/R
KAWASAKI KX 250 C1 - C2 83 => 85 F
KAWASAKI KX 250 86 => F/R
KAWASAKI KX 250 E1 - F1 87 => 88 R
KAWASAKI ZXR 250 89 => R
KAWASAKI ZZR 250 (EX 250 H) 90 => 93 R
KAWASAKI GPZ 305 B2 - B3 83 => F
KAWASAKI GPZ 305 A1 83 => F
KAWASAKI GPZ 305 BELT DRIVE 83 => F
KAWASAKI EX 4 400 95 => R
KAWASAKI GPX 400 85 => F
KAWASAKI GPZ 400 85 => F
KAWASAKI KLE 400 91 => R
KAWASAKI LX 400 ELIMINATOR - SE 90 => F
KAWASAKI XANTUS 400 92 => R
KAWASAKI Z 400 F2 85 => F
KAWASAKI ZR 400 A1 - F 83 => F
KAWASAKI ZX 400 C2 85 => F
KAWASAKI GPZ 500 S 88 => F
KAWASAKI GPZ 500 S 89 => 92 F
KAWASAKI GPZ 500 S 94 => 97 R
KAWASAKI KLE 500 91 => 93 R
KAWASAKI KLE 500 00 => R
KAWASAKI KX 500 A1 - A2 83 => 85 F
KAWASAKI KX 500 86 => F/R
KAWASAKI KX 500 C1 87 => 88 R
KAWASAKI Z 500 F 83 => F
KAWASAKI ZR 500 A1 83 => F
KAWASAKI Z 550 G1 SHAFT 83 => F
KAWASAKI Z 550 GT - SPORT 83 => F
KAWASAKI Z 550 F 83 => F
KAWASAKI ZR 550 A1 83 => F
KAWASAKI KLR 570 88 => F
KAWASAKI KLE 600 92 => R
KAWASAKI KLR 600 84 => F
KAWASAKI KLR 600 ELECTRIC STARTER 85 => F
KAWASAKI KLR 600 S 92 => F
KAWASAKI KL 650 TENGAI 89 => R
KAWASAKI KLR 650 87 => 94 R
KAWASAKI KLR 650 95 => R
KAWASAKI KLR 650 00 => R
KAWASAKI ZX-7 750 R NINJA 89 => 95 R
KAWASAKI ZX-7 750 R NINJA 96 => R
KAWASAKI ATV KXT 250 TECATE A2 - B1 85 => 86 F/R
KAWASAKI ATV KXT 250 TECATE B2 87 => F
KAWASAKI ATV KLF 300 BAYOU B1/B14 88 => 01 F

KTM 125 89 => 90 F/R
KTM 250 89 => 90 F/R
KTM EXC 300 93 => 96 R
KTM 350 89 => 90 F/R
KTM LC4 400 93 => R
KTM THE DUKE 400 94 => R
KTM 500 89 => 90 F/R

SUZUKI OR 50 80 => F
SUZUKI ZR 50 SKX - SLKX 81 => F
SUZUKI 3 E 80 => F
SUZUKI GT 80 L 81 => F
SUZUKI RG 80 GAMMA => 87 F
SUZUKI GP 100 C - DEN - N - X 78 => F
SUZUKI GN 125 R 94 => F
SUZUKI GS 125 ESZ 82 => F
SUZUKI RG 125 E 82 => 84 F
SUZUKI X4 125 => F
SUZUKI GSX 400 F (FOUR) FZ 81 => F
SUZUKI GSX 400 FD 81 => F
SUZUKI GS 450 S 87 => F

SYM HUSKY 125 96 => 98 F

TM all models 80 90 => 93 R

TM all models 125 90 => 93 R

YAMAHA TDR 125 (Italia) 90 => 91 R

Watermark